

HEBO-P33 PONTOON

MAIN DATA

Length o.a.	50.00 m
Beam o.a.	11.65 m
Depth	2.00 m
Draught (no load)	0.30 m
Capacity	764 Te
Deck load	4.98 Te/m ²
Gross tonnage	N/A
Tonnage or measurement certificate number (meetbrief)	HN 3406
ENI (European Number of Identification)	02011269
FD Number	FD 74556
Flag	Dutch

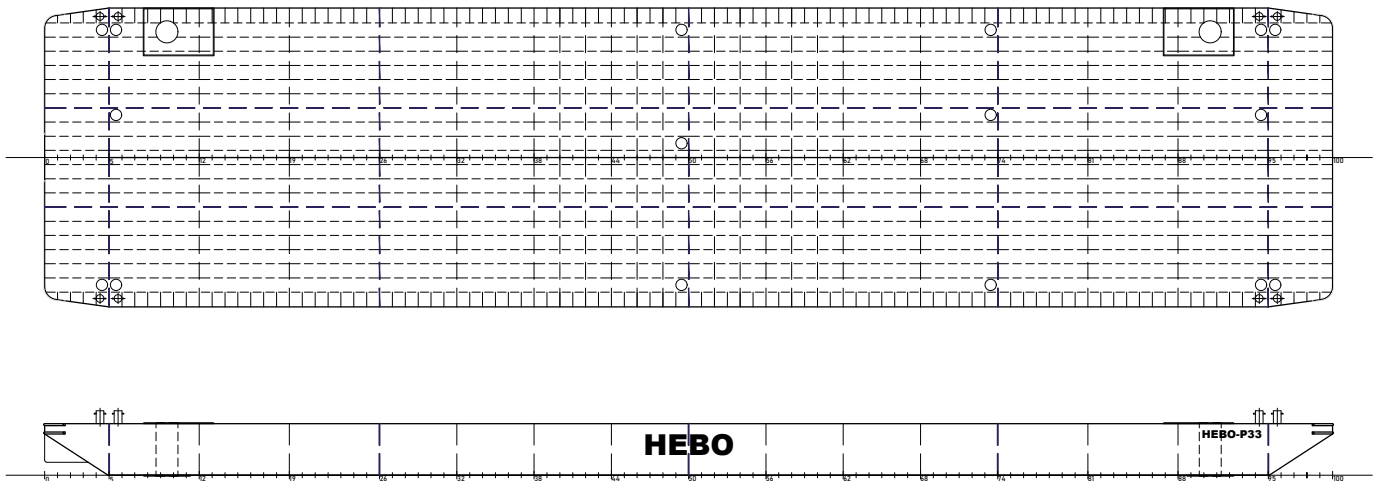
CERTIFICATES

Certificate (CvO)	SI 7375 R
-------------------	-----------

Certificate for navigation on the Rhine
Pontoon is equipped with 2 spudholes, several spudpiles available.

LOAD AND DRAUGHT SPECIFICATIONS

Load (T)	Draught (M)
53.57	0.40
107.50	0.50
161.78	0.60
216.41	0.70
271.39	0.80
326.72	0.90
382.40	1.00
438.41	1.10
494.76	1.20
551.46	1.30
608.50	1.40
665.88	1.50
723.59	1.60
764.14	1.67



DRAWING