



## HEBO-CAT 7

### OIL SPILL RESPONSE VESSEL

#### MAIN DATA

Length o.a.	51.50 m
Beam o.a.	11.80 m
Draught	2.50 m
Air draught min.	6.80 m
Speed	20 km/h
Propulsion	3 x 638 HP
DP System	Joystick – Dynamic position system
Sweeping arms	1 x 12m 300m <sup>3</sup> /h
Oil storage	199m <sup>3</sup>
Oil separator	300m <sup>3</sup> /h mechanic oil water separator
Suction skimmer	2700m <sup>3</sup> /h
High pressure washers	1 x 320 bar – 100°C
Breathing System	Multiple hour set and compressor
Oil Detection System	Oil detection radar
Generator	2 x 109 KVA, 1 x 25 KVA

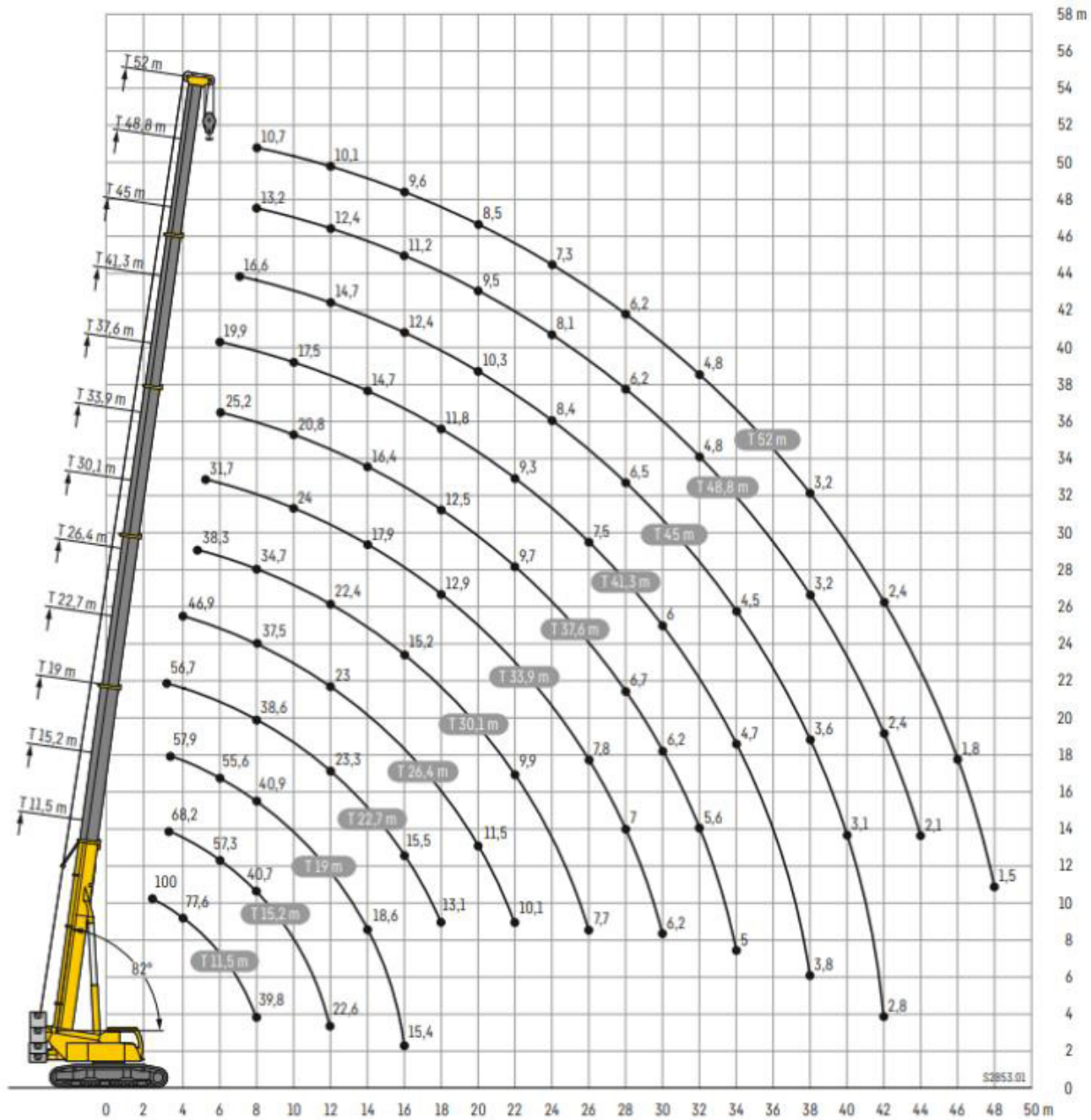
Callsign	PCNT
ENI (European Number of Identification)	
Certificate (Certificaat voor Zeeschepen die de Rijn bevaren)	SI 15627 Z
Tonnage or measurement certificate number (meetbrief)	
IMO Number	9606883
Flag	Dutch

#### CLASS

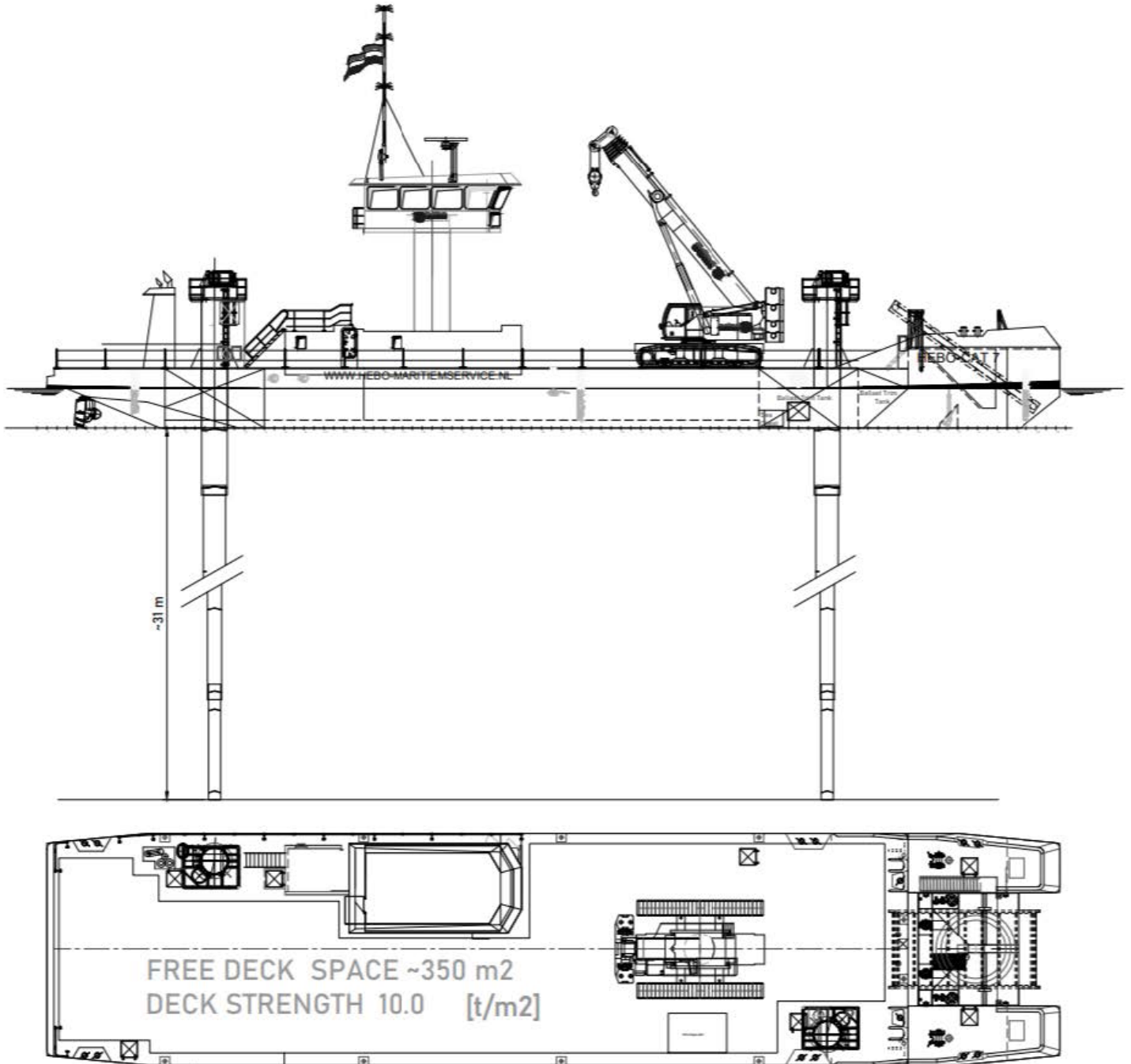
Lloyd's Register +100A1 + A2 (+) LMC UMS Oil Recovery Vessel  
 Equipment: Liebherr LTR 1100 telescopic crane, 2 hydraulic cranes, 1 Genie S85 28,5m, 2 telescopic spud poles with a max. length of 31m, 4 x solid waste storage 15m<sup>3</sup>, 1 x fifi pump 90m<sup>3</sup>/h, 1 x tank clean pump 16m<sup>3</sup>/h, 1 x cargo pump 12 bar 125m<sup>3</sup>/h, 2 x washing pumps 5 bar 35m<sup>3</sup>/h, 1 x salvage pump 600m<sup>3</sup>/h, 2 x salvage pump 130m<sup>3</sup>/h, 2 x clock pump 13m<sup>3</sup>/h

**Liebherr LTR 1100**

Max. load capacity	100 t
Telescopic boom	Telescopic boom
Max. hoist height	53 m
Max. radius	48 m



**CRANE LOAD CHART DRAWING**



GENERAL ARRANGEMENT DRAWING