

## Multi purpose vessel HEBO-CAT 15

Length o.a.	31.56m
Beam o.a.	9.59m
Min. draught	1.29m
Max. draught	2.64m
Air draught min.	6.93m
View level	4.00m
Clear space on board	120m <sup>2</sup>
Speed	13 km/h
Propulsion	1 x 750 HP + 1 x 150 HP
Generator	2 x 250 KVA 220/380 V, 1 x 25 KVA
Callsign	PFFL
ENI (European Number of Identification)	02509162
Certificate (Certificaat voor Zeeschepen die de Rijn bevaren)	SI 2367 Z
Tonnage or measurement certificate number (meetbrief)	HN10707
IMO Number	8951906
FD Number	FD 92309
Flag	Dutch

Certificate for navigation on the Rhine

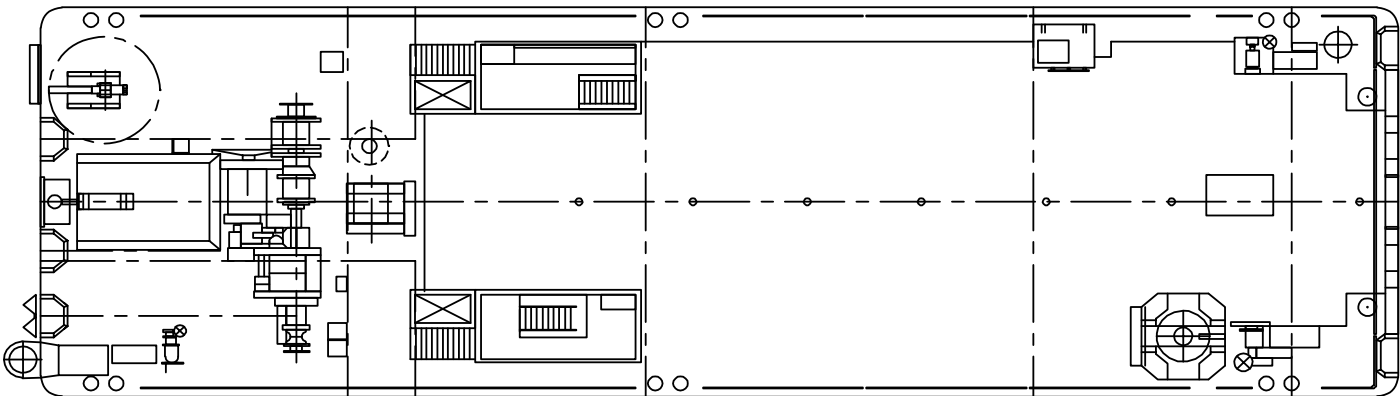
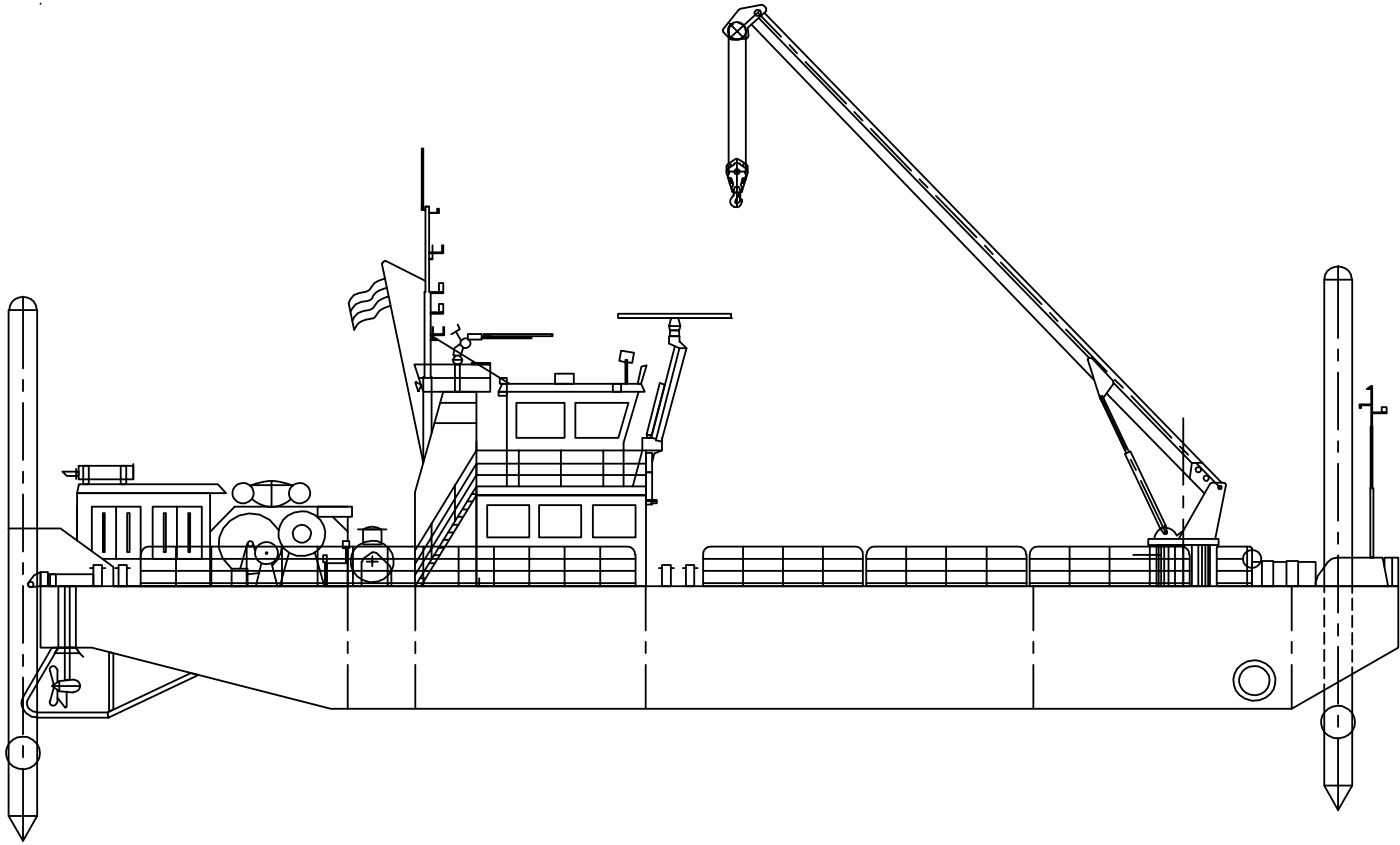
Class: DNV GL 100 A5 (coastal waters 30 miles)

4 point mooring with each 5t pull and 300m wire rope

Equipment: 2 Hydraulic cranes, 2 spud poles with a length of 12m, several pumps up to 1500m<sup>3</sup>/h

Fire extinguish installation: fire extinguish pump 360m<sup>3</sup>/h – 10 bar, 2 x water / foam monitors 300l/min each – reach 72m, fire hose connection on deck to be operated by hand, 3000l foam liquid, 4 x respirator masks

For reference only.





**hebo**  
**nebu**  
MARITIEMSERVICE

**Emergency response**  
**Special transport**  
**Oil spill response**  
**VCA Petrochemie**

**Salvage**  
**Heavy lift**  
**ISO 9001/ 2008**

- calamity suppression
- buoy- and anchortreatment
- salvage operations
- drilling operations
- environment research
- lifting- and transport activities
- maintenance- and contractor activities

Because of its slight draught and perfect manoeuvrability the vessel is suited for activities along the Dutch coast, Ysselmeer and Wadden Sea. RORO-Ramps can be used to move a crane or other vehicles onto the Jumbo. Containers can be placed on deck by the hydraulic marine crane. For load and discharge above 15Te a mobile crane of max. 200Te/m can be driven onto the Jumbo. The Jumbo meets the Dutch demands for navigation inspection (zone 4 / Coastel waters 30 Miles), Germanic Lloyd and has got a certificate for navigation on the Rhine.

### **Propulsion**

Schottelnavigator 700hp Cummins with bowscrew 150hp

### **Generators**

- 2 main generators 250KVA 220/380 V each
- Harbour/auxiliary generator 25KVA

### **Ballastpump / Salvage pump**

- BBA 300m<sup>3</sup>/h type B 156 serie B.L.
- Mobile pumps – capacity upto 1500m<sup>3</sup>/h.

### **Fire-extinguish installation**

- Fire extinguish-pump 360m<sup>3</sup>/h – 10bar.
- 2 water/foammonitors 300l/min each - reach 72m
- Fire-hose connection on deck to be operated by hand
- 3000l foam-liquid
- 4 compressed air-masks

### **Spudcans**

2 spudcans of 12m length each, diameter 0.6m. The spudcan at the back can be turned over on deck. Control from bridge and deck.

**HEBO Maritiemservice B.V.**  
Stouweweg 17-19  
8064 PD Zwartsluis  
The Netherlands

**Phone** : +31 (0)38 386 81 80  
**Fax** : +31 (0)38 386 84 94  
**E-mail** : info@hebo.eu  
**Website** : www.hebo.eu

**IBAN** : NL87 ABNA 0417 3607 97  
**BIC** : ABNANL2A  
**KvK** : 050.81.811  
**BTW nr.** : NL 8160.40.278.B.01



**hebo**  
**nevo**  
MARITIEMSERVICE

**Emergency response**  
**Special transport**  
**Oil spill response**  
**VCA Petrochemie**

**Salvage**  
**Heavy lift**  
**ISO 9001/ 2008**

### Hydraulic crane

Heila HMR 150/15F marine crane

Capacity:

15 T – 4,5m

12.5 T – 11,0m

9 T – 15,0m

Stern:

Hydraulic crane: 14tm, 1T – 7,0m

### Anchor winches

- 1 central stern anchor mooring winch – 4 drums with 15 T ropecapacity
- 2 forward anchor mooring winches – 12 T ropecapacity
- Control from bridge and deck
- 4 point mooring system

### Navigation equipment

- 1 radar
- 2 VHF-transmitters
- Vigil RX navigator
- Wind-gauge
- Radiotelephone
- 2 Echo sounders
- Liquid compass
- Auto-pilot
- Gasdetector

### Accommodation

- 2 cabins 1 person
- 1 cabin 2 persons
- 1 cabin 4 persons

**HEBO Maritiemservice B.V.**  
Stouweweg 17-19  
8064 PD Zwartsluis  
The Netherlands

**Phone** : +31 (0)38 386 81 80  
**Fax** : +31 (0)38 386 84 94  
**E-mail** : info@hebo.eu  
**Website** : www.hebo.eu

**IBAN** : NL87 ABNA 0417 3607 97  
**BIC** : ABNANL2A  
**KvK** : 050.81.811  
**BTW nr.** : NL 8160.40.278.B.01